

**Integrating Numerical Simulation and
Geometric Design Technology**
4th meeting, Winter school



Monday, January 26 - Friday, January 30, 2015

All talks take place in Bürglsaal.

Monday, January 26, 2015

12:15 -14:15		Lunch
14:15-15:45	*TDF, 30 min. *TDF, 30 min. *TDF, 30 min.	Urska Zore, JKU – Johannes Kepler University Antonella Falini, JKU – Johannes Kepler University Yue Jia, Bauhaus Universität-Weimar
15:45-16:15		Coffee break
16:15-17:45	Invited Speaker	Ulrich Langer, Johannes Kepler University, Linz
18:00		Dinner

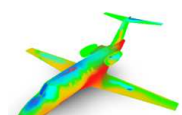
Tuesday, January 27, 2015

8:45-10:15	Invited Speaker	Wenping Wang, The University of Hong Kong
10:15-10:45		Coffee break
10:45-12:15	*TDF, 30 min. *TDF, 30 min. *TDF, 30 min.	Zhibin Niu, Cardiff University Daniel Alves Paladim, Cardiff University Huilong Ren, Bauhaus Universität-Weimar
12:15 -14:15		Lunch
14:15-15:45	*TDF, 30 min. *TDF, 30 min. *TDF, 30 min.	Md Naim Hossain, InuTech GmbH Sumit Paranjape, Simpleware Ltd. Luca Giovannelli, Universitat Politècnica de València
15:45-16:15		Coffee break
16:15-17:45	Invited Speaker	Tom A. Grandine, Boeing, Seattle
18:00		Dinner

Wednesday, January 28, 2015 morning

8:45-10:15	group rooms	Discussion in groups and revision of talks
10:15-10:45		Coffee break
10:45-12:15	group rooms	Discussion in groups and revision of talks
12:15 -14:15		Lunch

* TDF: 15 min. talk, 5 min. scientific discussion, 10 min. feedback.
RT: 15 min. revised talk, 5 min feedback & scientific discussion



**Integrating Numerical Simulation and
Geometric Design Technology**
4th meeting, Winter school



Monday, January 26 - Friday, January 30, 2015

Wednesday, January 28, 2015 afternoon

14:15-15:45	group rooms	Discussion in groups and revision of talks
15:45-16:15		Coffee break
16:15-17:45	group rooms	Discussion in groups and revision of talks
18:00		Dinner

Thursday, January 29, 2015

8:45-10:15	Invited Speaker	Malcolm Sabin, University of Cambridge, Computer Laboratory
10:15-10:45		Coffee break
10:45-12:15	*TDF, 30 min. *RT, 20 min. *RT, 20 min. *RT, 20 min.	Hossein Asadi Kalameh, Cenaero Urska Zore, JKU – Johannes Kepler University Antonella Falini, JKU – Johannes Kepler University Zhibin Niu, Cardiff University
12:15 -14:15		Lunch
14:15-15:45	*RT, 20 min. *RT, 20 min. *RT, 20 min. 30 min.	Luca Giovannelli, Universitat Politècnica de València Huilong Ren, Bauhaus Universität-Weimar Yue Jia, Bauhaus Universität-Weimar Management meeting
15:45-16:15		Coffee break
16:15-17:45	Invited Speaker	Michel Bercovier, The Hebrew University of Jerusalem
18:00		Dinner

Friday, January 30, 2015

8:45-10:15	Invited Speaker	David Großmann, MTU Aero Engines AG, Munich
10:15-10:45		Coffee break
10:45-12:15	*RT, 20 min. *RT, 20 min. *RT, 20 min. *RT, 20 min. 10 min.	Daniel Alves Paladim, Cardiff University Sumit Paranjape, Simpleware Ltd. Md Naim Hossain, InuTech GmbH Hossein Asadi Kalameh, Cenaero Weimar closing
12:15 -14:15		Lunch

* TDF: 15 min. talk, 5 min. scientific discussion, 10 min. feedback.
RT: 15 min. revised talk, 5 min feedback & scientific discussion

